

# EASY TO REMANUFACTURE AUSTRALIAN CARTRIDGES



DELL 1320CN



KYOCERA TK-112



KYOCERA TK-332



OKIDATA C5100



OKIDATA C7300



OKIDATA C9300



OKIDATA C9600



SAMSUNG CLP-350 - COLOR



SAMSUNG CLP-350 - BLACK



XEROX PHASER 7760

# EASY TO REMANUFACTURE AUSTRALIAN CARTRIDGES

By Mike Josiah and the Technical Staff at UniNet

This is a continuation in a series on easy to do color and monochrome cartridges you may be passing up but shouldn't be. They represent some of the best profit opportunities currently in our industry. These cartridges are all very simple, and with a good majority of them there is nothing to test! Training is minimal and in all cases the time needed to do them is very small. For the purposes of these articles, we will not be going in depth but to be honest there really is no need. Some use chips while some do not. Some have waste chambers and others are purely a supply hopper. All of this will be covered.



## DELL 1320CN

The Dell 1320CN cartridges are rated for 2000 pages. The OEM part numbers are 310-9058 high yield Black, 310-9060 high yield Cyan, 310-9064 high yield Magenta, and 310-9062 Yellow. There is a chip that must be replaced every cycle.



1. Remove the black tape from the seam of the supply hopper and the waste chamber. Save the tape for use when re-assembling the cartridge.



2. Press in on the two tabs of one side as shown to release the waste chamber. It is sometimes helpful to press back on the waste chamber as the tabs are pressed in.



3. Remove the supply hopper cover.

Clean out any remaining toner from both chambers.



4. Fill the hopper with the appropriate replacement color toner. Remember, while the cartridges all look the same, they are not interchangeable. Each color has a different set of plastic tabs.



5. Clean the plastic lip where the hopper cover sits of any toner.

Replace the cover.





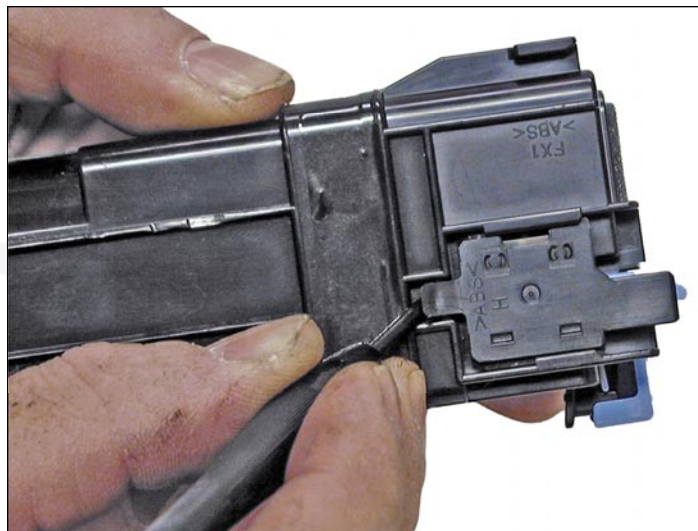


6. Install the waste chamber on to the supply hopper.

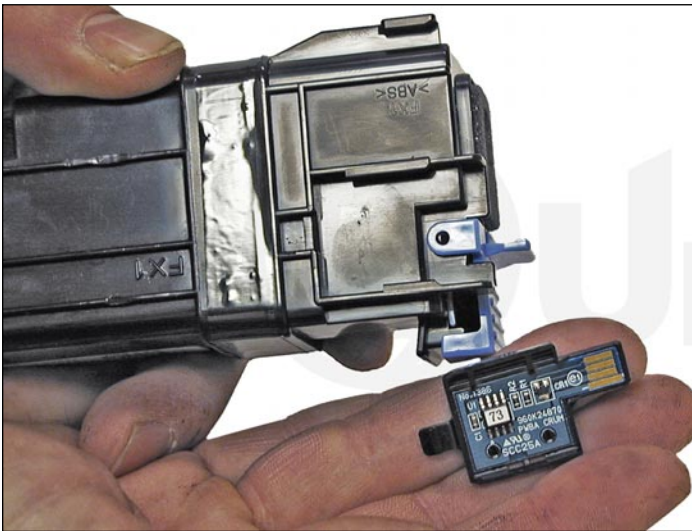
Make sure all four tabs are locked in place.



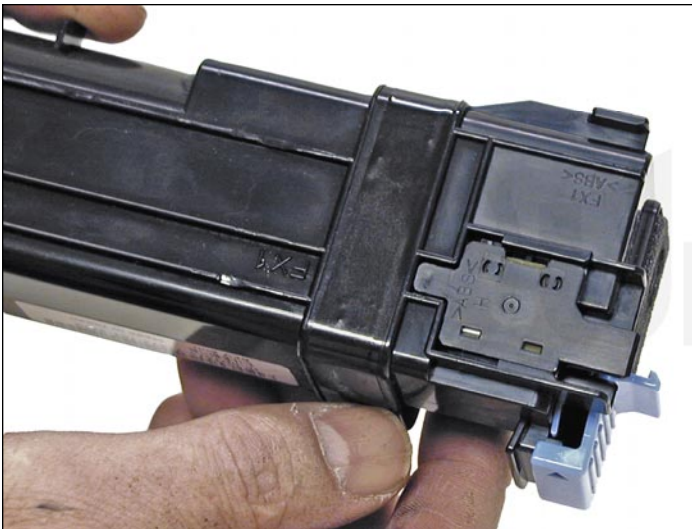
7. Re-install the black tape seal across the seam. If the OEM tape is not useable, good black rubber electrical tape (NON-vinyl type) will work fine (toner will stick to anything made from vinyl).



8. Carefully pry up the plastic chip holder tab.



9. Slide the holder out of the cartridge and replace the chip.



10. Slide the holder back in place until the tab locks in place.



### KYOCERA TK-112

The Kyocera TK-112 series toner cartridges are used in the FS-720, 820 and the 1016. They are rated for 6,000 pages at 5% coverage. There are also the TK-112E and TK-110 cartridges that are sold in Europe (3,000 and 6,000 pages respectively). There is no chip on the cartridge.



1. Remove the fill plug.

Clean out all the remaining toner.



2. Make sure the toner port is closed.

Fill with new replacement toner for use in TK-112.



3. Re-install the fill plug.

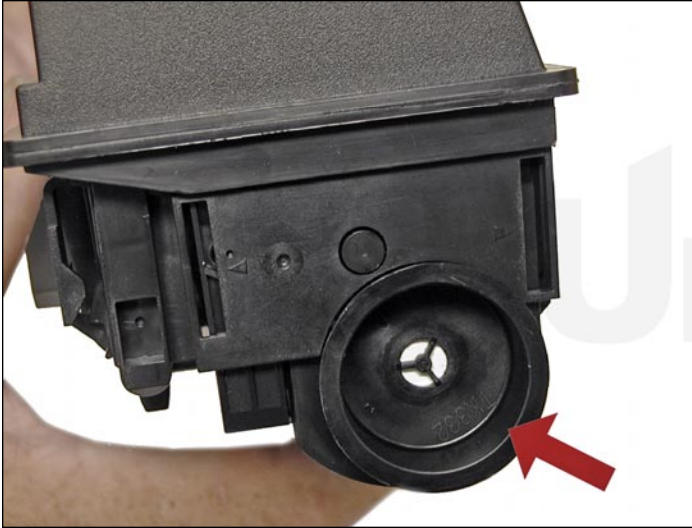




### KYOCERA TK-332

The Kyocera TK-332 series toner cartridges are used in the FS 4000. They are rated for 20,000 pages at 5% coverage. The toner cartridge sells with a waste toner bottle and a corona grid cleaner. There is a chip on the cartridge that must be replaced each cycle. The printer ships with starter toner cartridge rated at 10,000 pages.

The supplies used in this cartridge are also compatible with the following toner cartridges: FS 2000 OEM TK-312 (USA) and TK-310 (Europe) rated at 12,000 pages; FS 3900 OEM TK-322 (USA) and TK-320 (Europe) rated at 15,000 pages; and FS 4000 OEM TK-332 (USA) and TK-330 (Europe) rated at 20,000 pages.



1. Remove the fill plug.

Clean out all the remaining toner.



2. Make sure the toner port is closed.

Fill with new replacement toner for use in TK-332.





3. Re-install the fill plug.



4. Clean out or replace the waste bottle.



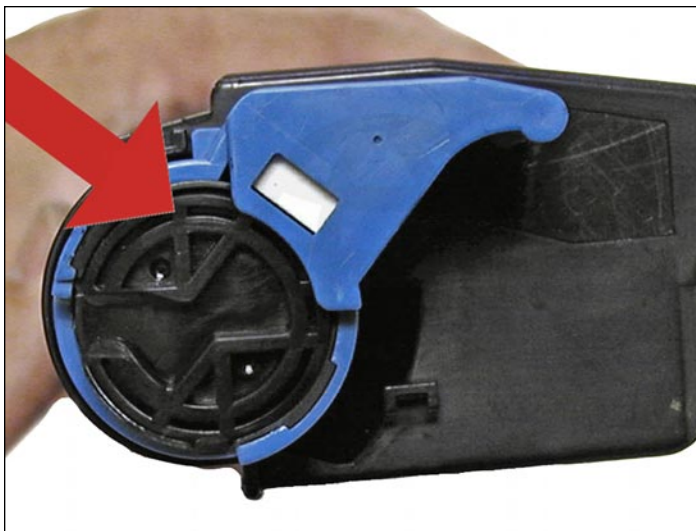
5. Replace the RF type chip (the chip is manufactured into the label).



### OKIDATA C5100

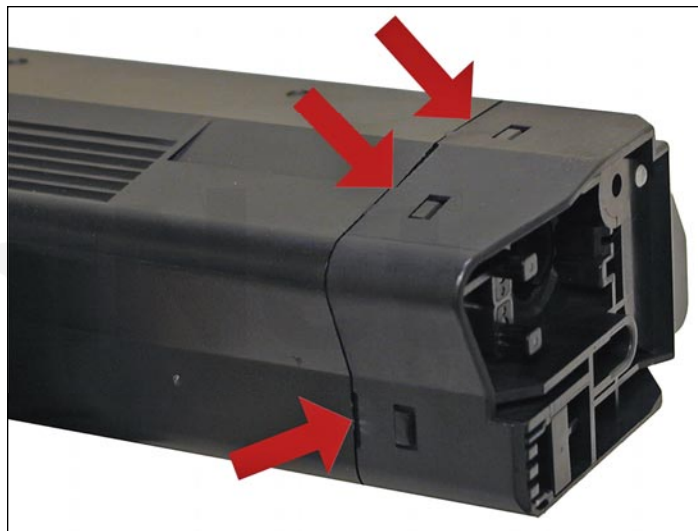
The Okidata C5100 series of toner tubes are rated for 5,000 pages at 5% coverage. They are compatible with the C5000, 5100, 5150, 5200, 5250, 5300, 5400, 5450, MFP 5510, 5250 and 5540. The OEM part numbers are 42127404 Black, 42127403 Cyan, 42127402 Magenta, and 42127401 Yellow.

There is no chip on the cartridge.



1. Remove the fill plug from the blue handle.

Clean out the old toner from the cartridge.



2. Press in on the tabs on the opposite side of the cartridge.

Remove the end cap and remove all the remaining toner.



3. Open the toner port, and snap the end cap back in place.

As you press the end cap on, watch through the port to make sure the mixing auger fits into the drive gear.



4. Close the port, fill with new toner, and replace the fill plug.

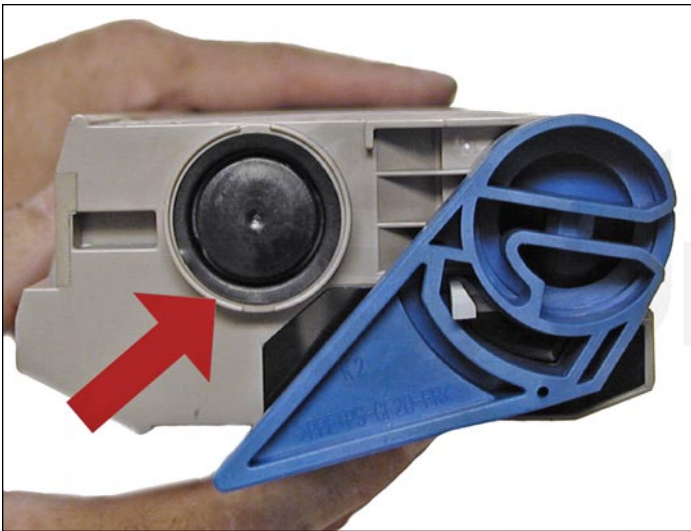




### OKIDATA C7300

The Okidata C7300 series toner cartridges are rated for 10,000 pages black at 5% coverage. They are compatible with the C7000, 7100, 7200, 7300, 7400, and C7500 machines. The OEM part numbers are the 41963004 Black, 41963003 Cyan, 41963002 Magenta, and 41963001 Yellow.

There is no chip on the cartridge.



1. Remove the fill plug from the side of the cartridge.

Clean out the old toner from the cartridge.

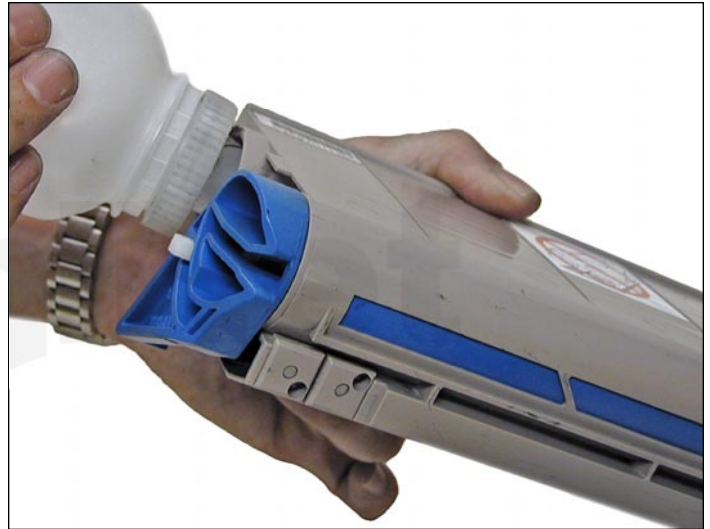


2. Press in on the tabs on the opposite side of the cartridge.

Remove the end cap and remove all the remaining toner.



3. Start to snap the end cap back in place. As you press the end cap on, watch to make sure the mixing auger fits into the bushing and metal rod fit into their proper places.



4. Close the port.

Fill with new toner and replace the fill plug.



### OKIDATA C9300

The Okidata C9300 series toner cartridges are rated for 15,000 pages at 5% coverage. They are compatible with the C9000, 9100, 9200, 9300 and C9500 machines. The OEM part numbers are the 41963604 Black, 41963603 Cyan, 41963603 Magenta, and 41963601 Yellow.

There is no chip on the cartridge.



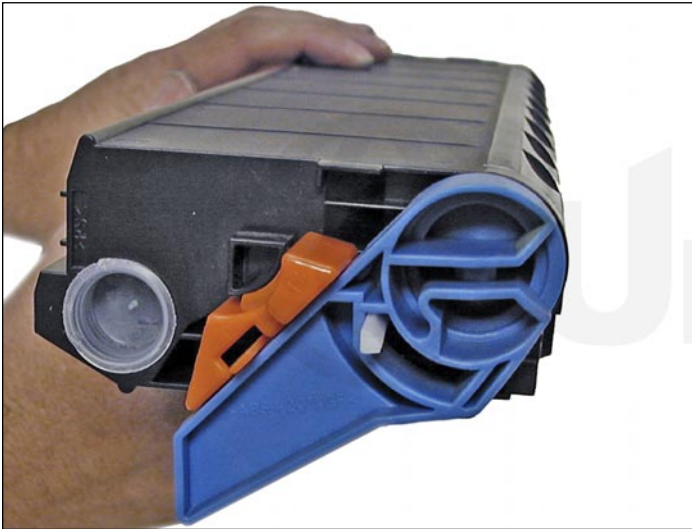
1. Remove the fill plug and clean out all remaining toner.



2. Make sure the toner port is closed before refilling.

Fill with the appropriate replacement color toner.





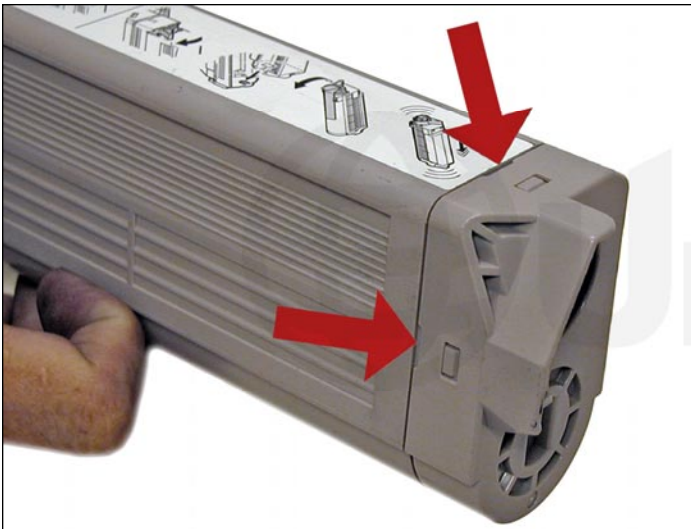
3. Replace the fill plug.



### OKIDATA C9600

The Okidata C9600 series toner cartridges are rated for 15,000 pages at 5% coverage. They are compatible with the C9600 and C9800 machines. The OEM part numbers are the 42918904 Black, 42918903 Cyan, 42918902 Magenta, and 42918901 Yellow.

There is a chip on the cartridge that must be replaced each cycle.



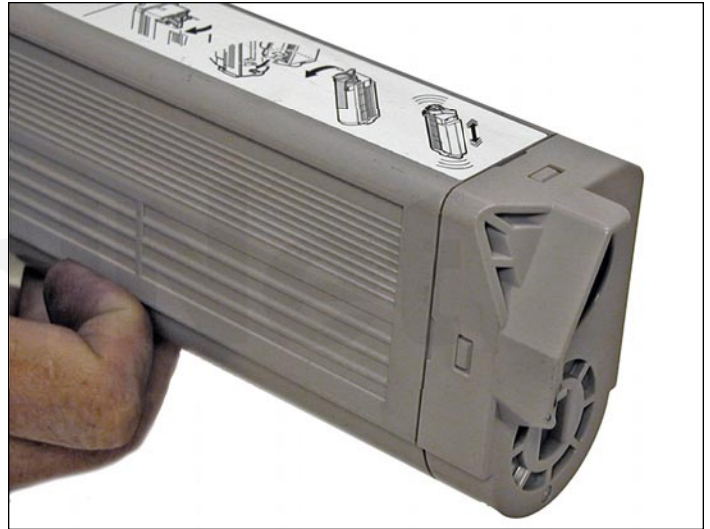
1. On the side opposite the blue handle, press in on the tabs of the end cap.

Remove the end cap.

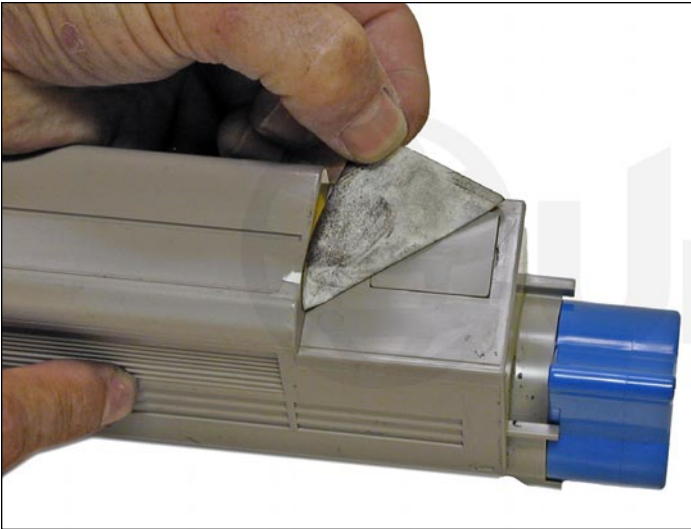
Remove all the old toner from the hopper.



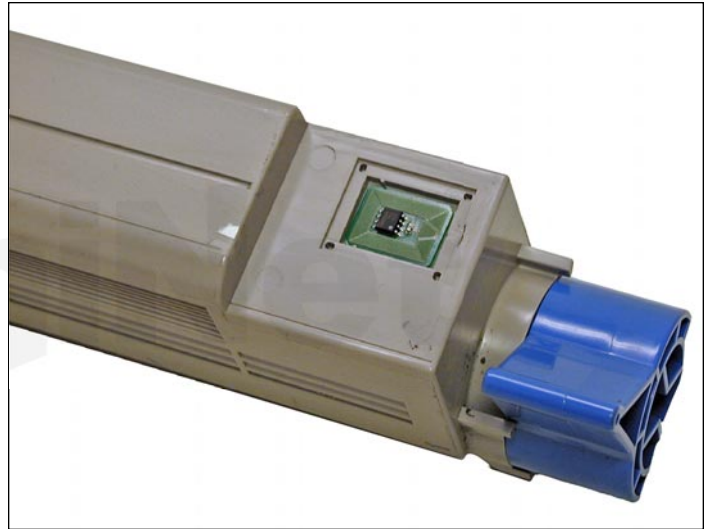
2. Fill with new replacement toner for use in Okidata C9600.



3. Replace the end cap.



4. Peel up the colored label.



5. Remove the chip cover.

Replace the chip.





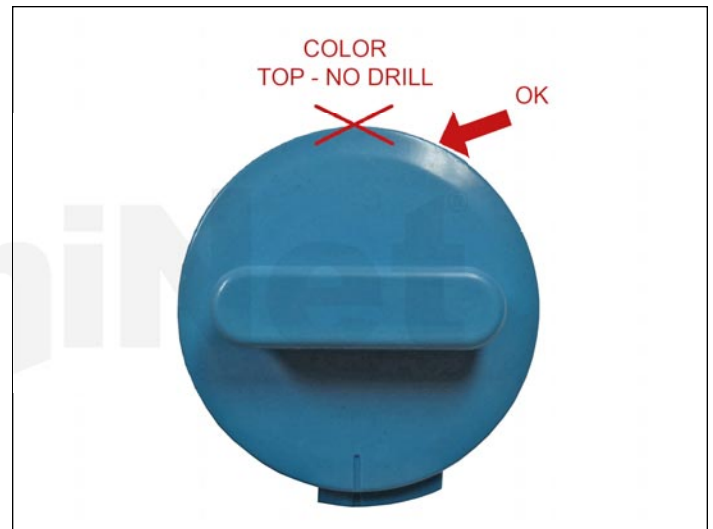
6. Replace the chip cover and label.



### SAMSUNG CLP-350

The CLP-350 cartridges are rated for 4,000 pages Black and 2,000 pages Color. The OEM cartridge part numbers are CLP-K350A Black, CLP-C350A Cyan, CLP-M350A Magenta, and CLP-Y350A Yellow.

There is a chip that has to be replaced each cycle, and the cartridge itself has to be modified slightly in order to refill it.



1. In order to clean and fill the cartridge, a hole must be drilled or melted into the cartridge. The hole cannot be placed at the top of the cartridge, as that will cause cartridge problems. The black cartridge (left photo) should have the hole placed on one of the flat sides. The color cartridges (right photo) should be between 1 and 3 o'clock position or in the top right quarter.



2. The hole can be drilled with a 1/2" drill bit or melted with a soldering iron. If it is drilled, great care must be taken to get all the shavings out. If it is melted, the outer edge of the hole has to be shaved flat with a razor blade. Clean out all the remaining toner/shavings thoroughly.



3. Insert a small funnel into the hole and fill with new replacement toner for use in CLP-350.



4. Cover the hole using a small piece of tape. Make sure the seal is tight and that there are no leaks. Also make sure the tape/label does not extend to the top of the cartridge as it is installed. This area has a very tight fit and the seal may be torn off as the cartridge is installed.

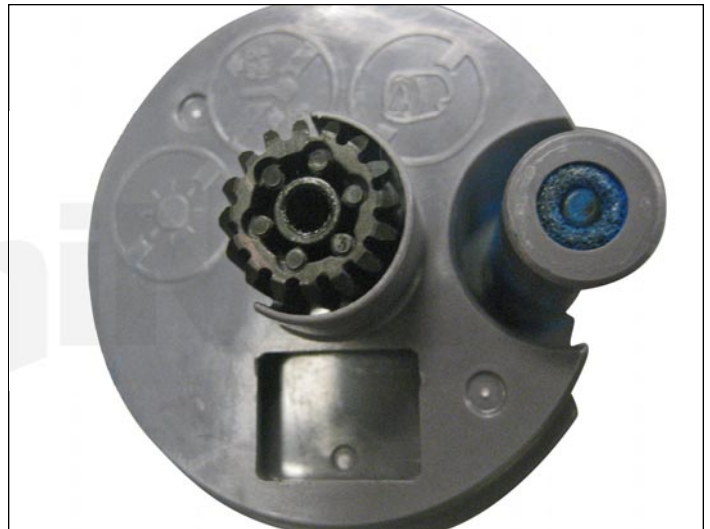




### REPLACING THE CHIP

5. **UPDATE:** Do not attempt to remove the complete OEM chip as it is fused into the cartridge.

You will on the other hand, need to remove the OEM contact by using a small flat head screw driver and prying them off.



6. Peel off the strip to expose the adhesive on the reverse side of the new hardware replacement chip. Install the new chip in the small space shown. Remanufacturing complete.

**NOTE: Starter cartridges** do not have a chip, our UniNet new hardware chip will fit in the empty space.



### XEROX PHASER 7760

The Phaser 7760 cartridges are rated for 32,000 pages Black and 25,000 Color. The OEM numbers are 106R01163 Black, 106R01160 Cyan, 106R01161 Magenta, and 106R01162 Yellow.

There is a chip that must be replaced every cycle.



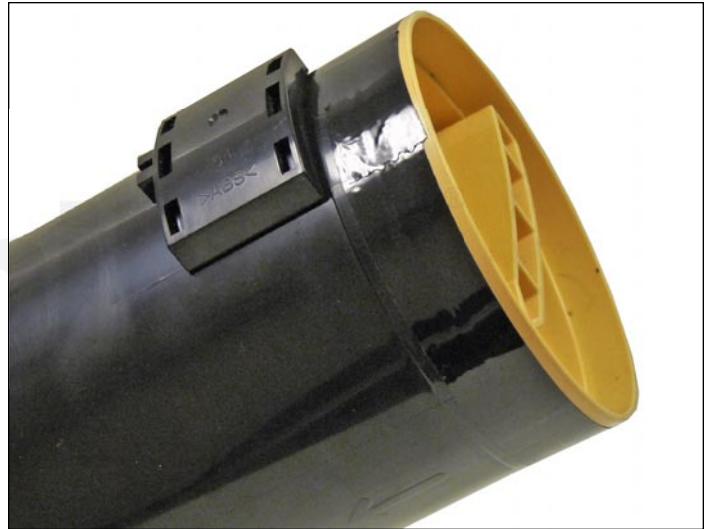
1. Remove the tape from the colored end cap.



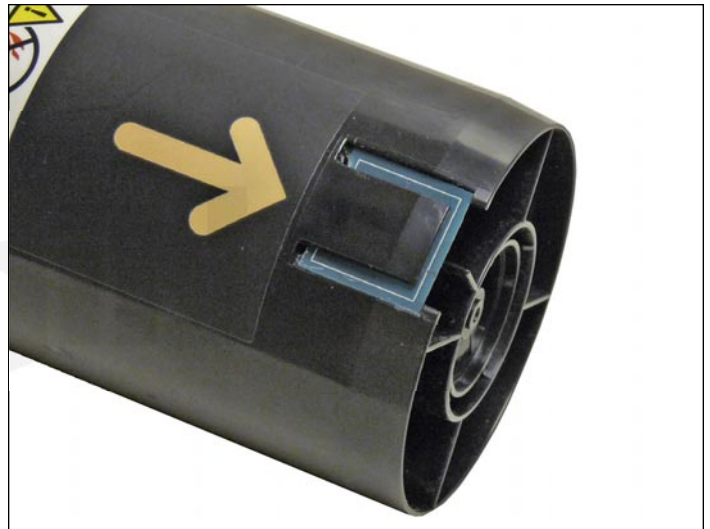
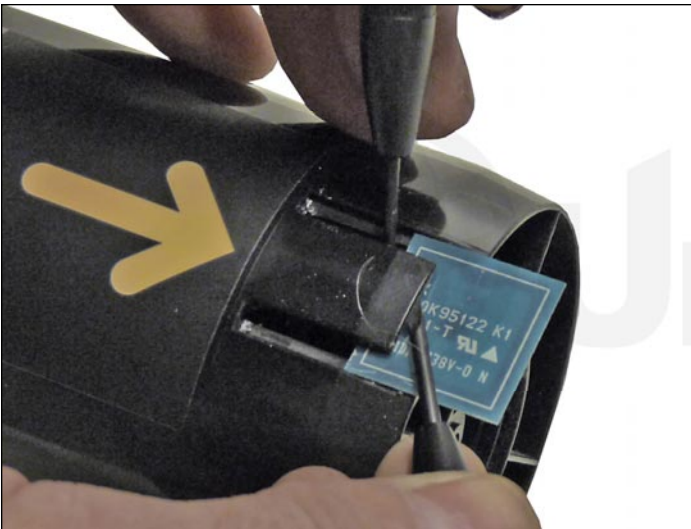
2. Remove the end cap.



3. Vacuum the tube clean and fill with new Phaser 7760 toner.



4. Replace the end cap. Replace the tape.



5. Replace the chip by prying up the center tab while using a small screwdriver to move the chip out.

Install the new chip component side down.

Make sure the two edge tabs lock the chip in place.