

HP® COLOR LASERJET 3600 • 3800

TONER CARTRIDGE REMANUFACTURING INSTRUCTIONS



HP® COLOR LASERJET 3800 TONER CARTRIDGE

REMANUFACTURING THE HP COLOR LASERJET 3600/3800 TONER CARTRIDGE

By Javier Gonzalez and the Technical Staff at UniNet



FRONT SIDE OF CARTRIDGE



BOTTOM



REAR/CHIP SIDE



CONTACT SIDE (GEARLESS)



GEAR SIDE



CARTRIDGE DISASSEMBLY

1. Start by removing the melted residue around the pin on the gear side of the cartridge.



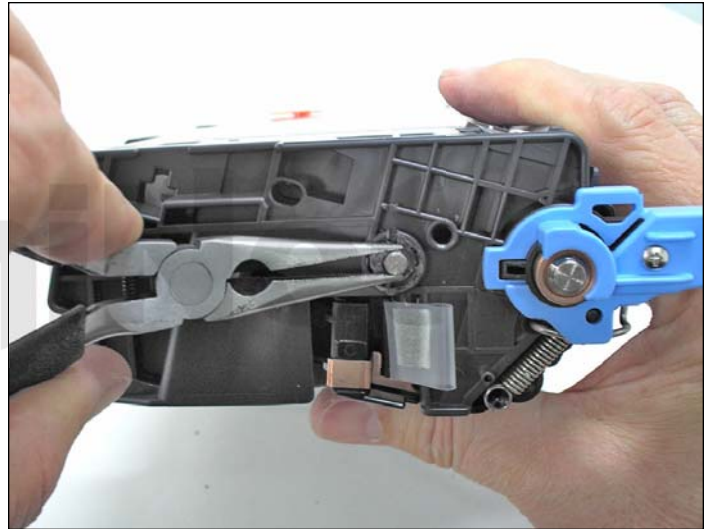
2. Repeat the same procedure on the contact (gearless) side.



3. Drill a small hole just above the pin on both sides of the cartridge.

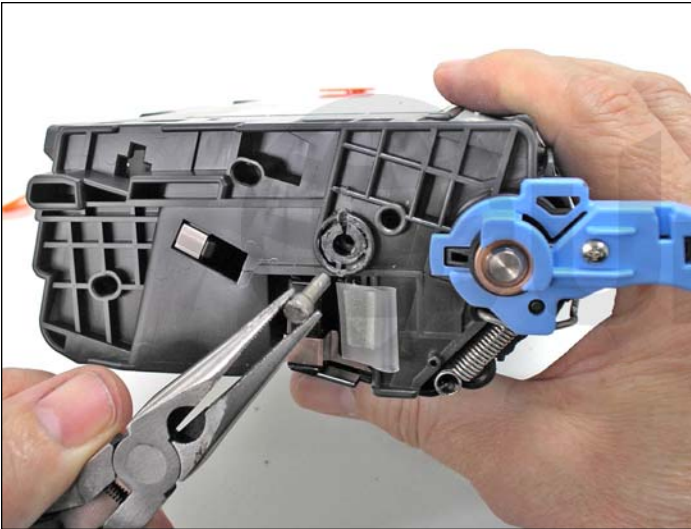


4. Insert a scribe or pin pusher through the hole to maneuver the pin out from the contact side.



5. Extract the pin using small pliers.

This pin is short and unique on this side.



6. Pin extracted.

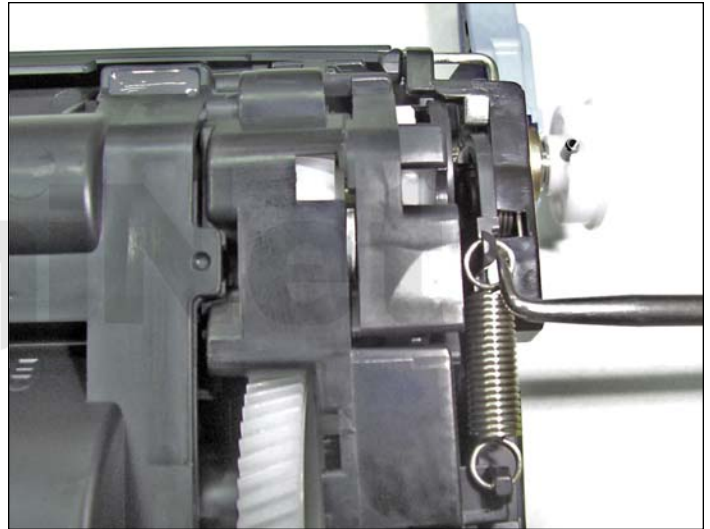


7. Repeat the extraction procedure on the gear side. The pin will pass thru the center of the main drive gear during extraction.



8. Notice the different pin sizes:

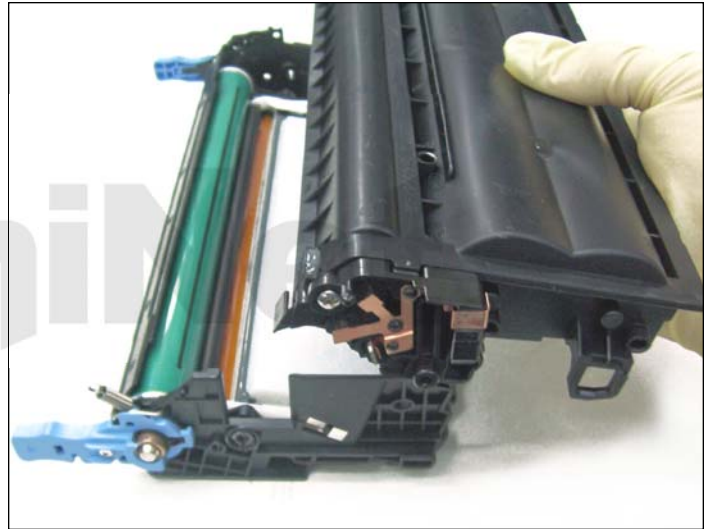
The contact side pin is short and the gear side pin is long.



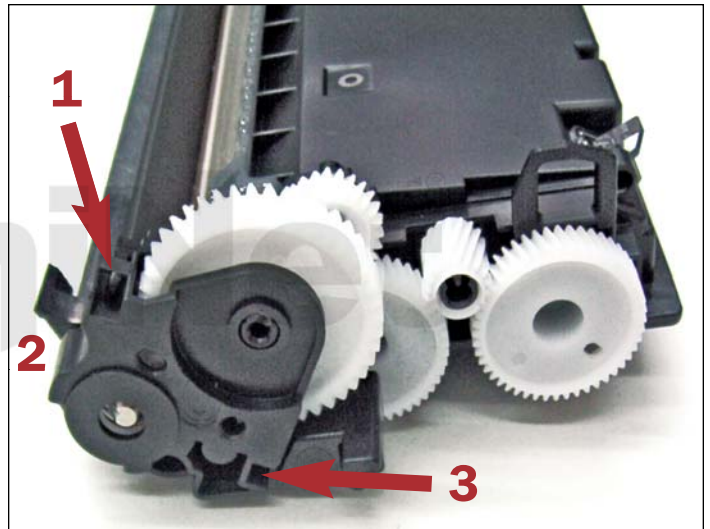
9. Using a hook tool, release the spring from the drum unit on the gear side of the cartridge.



10. Release the spring on the contact side.



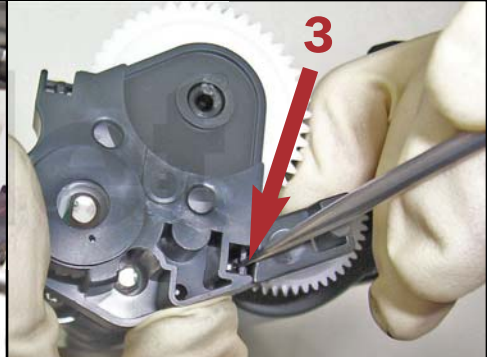
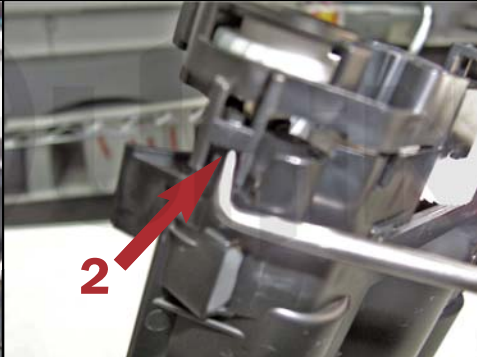
11. Separate the two halves.



TONER HOPPER DISASSEMBLY

12. We will begin with the removal of the gear side end plate shown.

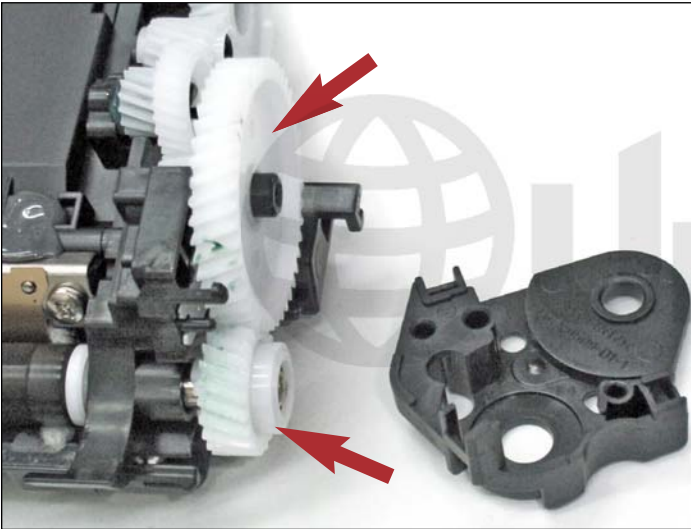
The end plate is held in place by three interlocking tabs.



13. Locate **tab #1** on top of the end plate. Using a hook tool, press the tab away to release it.

Locate the and release **tab #2** in the same manner.

Locate and release **tab #3** near the bottom of the end plate.



14. Remove the end plate.

Also, remove the developer drive gears shown.

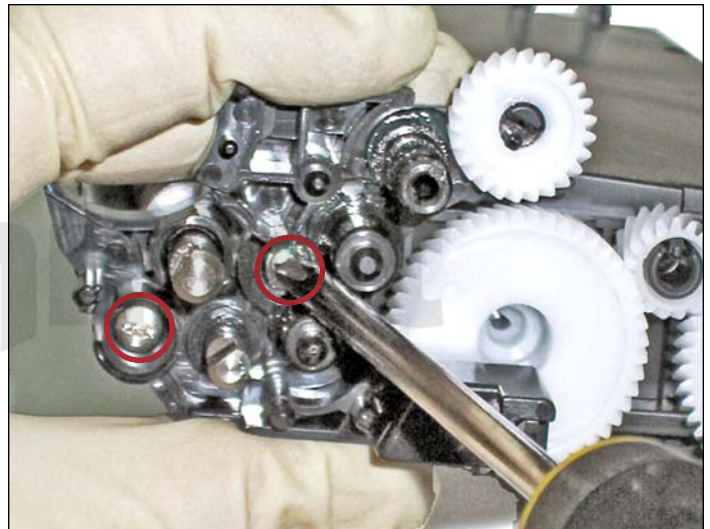


15. Using a hook tool, slide out the gear retaining plate.

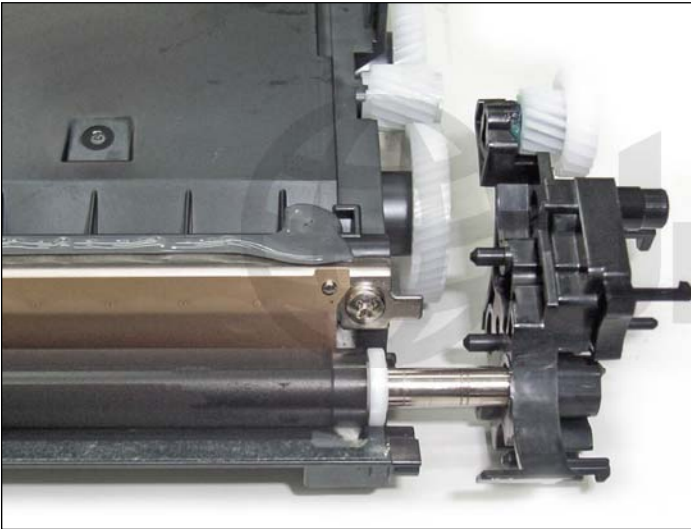
This will reveal three remaining drive gears beneath.



16. Remove the drive gears to access the gear support plate.



17. Remove the two screws from the gear support plate.



18. Slide the gear support out.



19. Remove the two screws from the developer roller gearless support plate on the contact side of the cartridge.



20. Remove the gearless support plate.



21. Remove the developer roller.



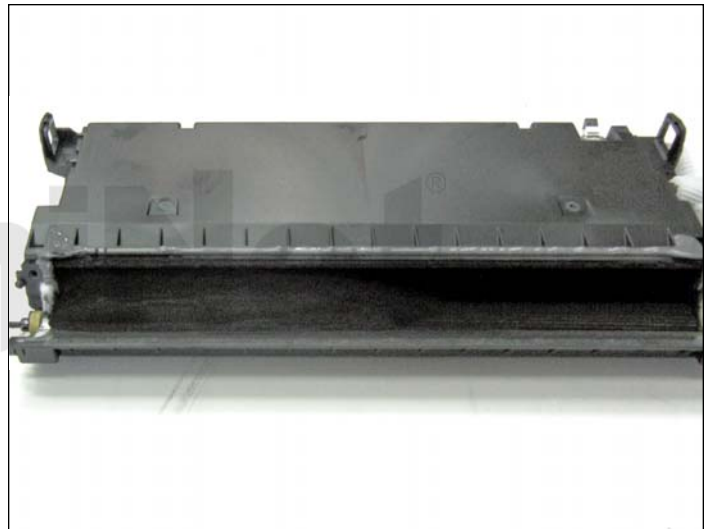
22. Remove the two screws from the doctor blade shown.



23. Using a small flathead screwdriver, pry the the doctor blade loose from the OEM adhesive. Pry loose from one side only!



24. Lift the loosened blade completely out by hand.

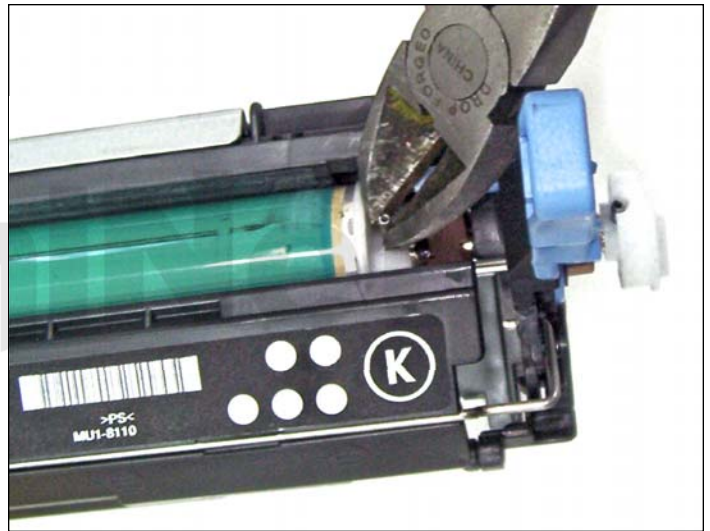


25. Doctor blade removed. Clean the hopper thoroughly using compressed air and fill with new toner through the opening shown. Clean and install the doctor blade to seal in the toner. Assemble the remaining hopper components, following the previous steps in reverse order, starting from step 21.



DRUM UNIT DISASSEMBLY

26. Using a small hammer and chisel, punch the locking drum pin out halfway through its hub.



27. Rotate the drum so the pin is visible.

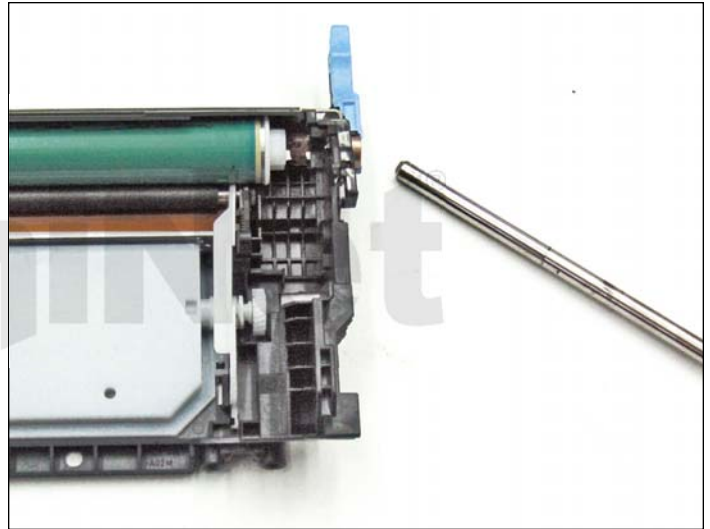
Extract the pin using medium size pliers.



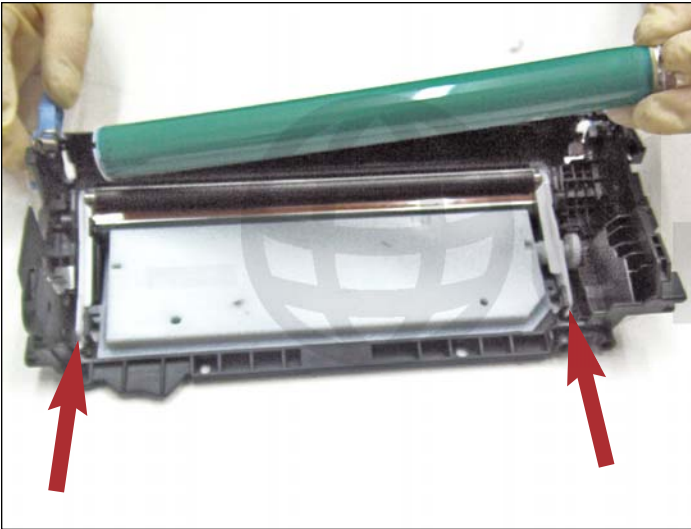
28. Pin removed.



29. Using a small hammer and chisel, punch in the drum axle from the opposite side to release it.



30. Pull the drum axle out completely from the pin side as shown.

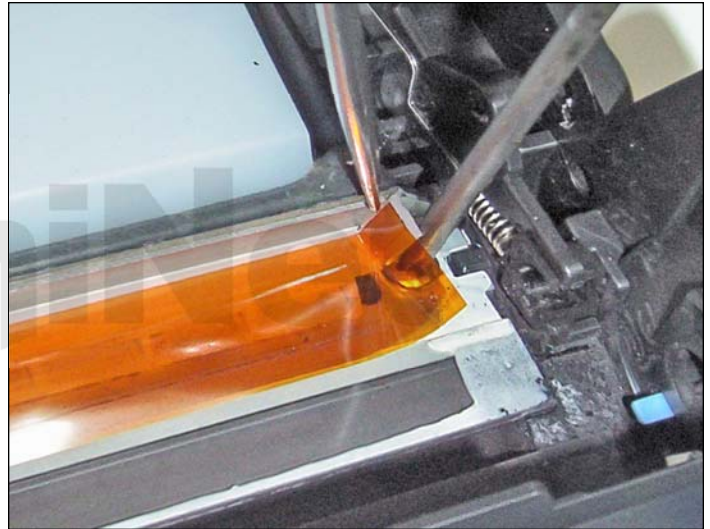


31. Remove the OPC drum in the manner shown.

Remove the PCR support arms to release the PCR by lifting them up as shown.



32. Remove the PCR.



33. Remove the two screws from both ends of the wiper blade. Use a scribe or straight hook tool to carefully lift the ends of the PCR contact strip to access the screws.



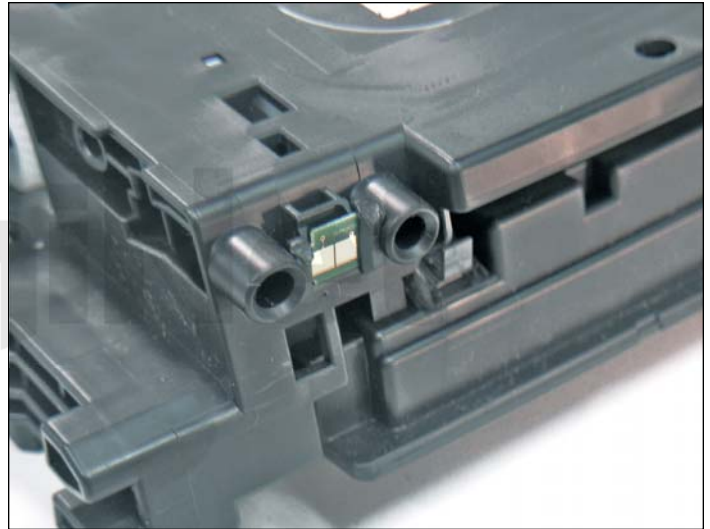
34. Insert a small screwdriver or scribe between the wiper blade and the waste hopper glued to it beneath. Move the tool downward in a seesaw manner to pry the wiper blade up and release it from its adhesive seal.

The waste hopper will act as a lever.



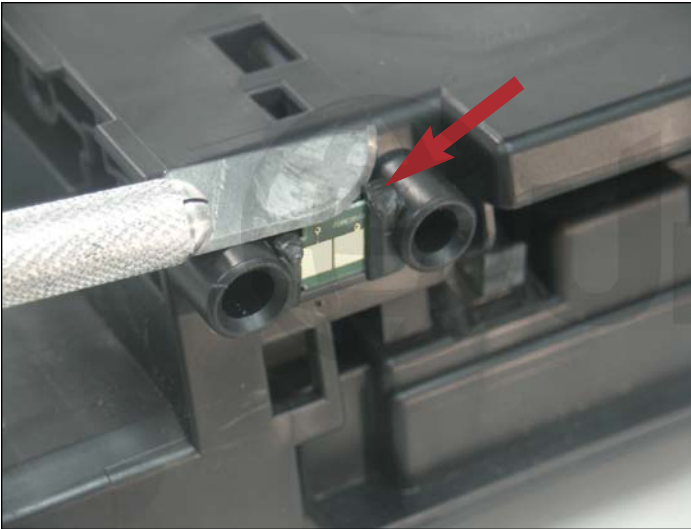


35. Now slowly but firmly, pull the loose end of the wiper blade upward with your hand as shown until it is completely removed. Proceed to empty the waste hopper and clean the rest of the drum unit thoroughly using compressed air. Clean the wiper blade and parts and reassemble the cartridge following the corresponding steps in reverse order.



REPLACING THE OEM CHIP

36. Locate the OEM chip near the rear of the remanufactured cartridge.



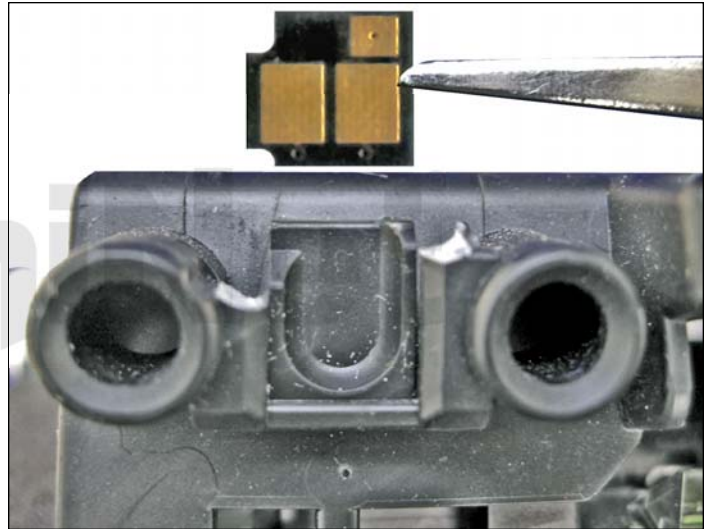
37. Using a small scalpel, carefully cut away the melted plastic tabs that are holding it in place.



38. Insert the scalpel tip under the chip and gently lift it out, sliding it through the plastic grooves.



38. Apply a small amount of plastic cement into the plastic grooves. This will seal the replacement chip into place from each side. **NOTE:** Be careful not to apply too much cement that can spread over the contacts rendering the chip useless.



39. Insert the new aftermarket chip with the gold contact plates facing outward in the exact position shown. The chip will not function if reversed or positioned any other way.



40. Allow cement to dry before testing the cartridge.