

# SAMSUNG® CLP-510

## TONER CARTRIDGE REMANUFACTURING INSTRUCTIONS



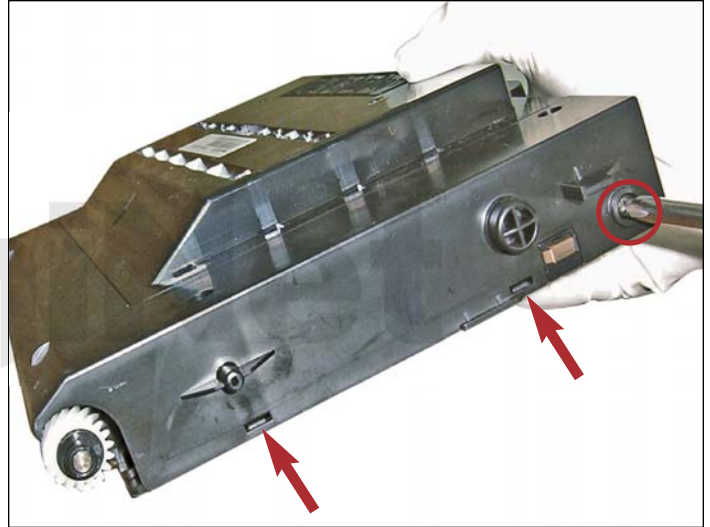
SAMSUNG CLP-510 TONER CARTRIDGE

# REMANUFACTURING THE SAMSUNG CLP-510 TONER CARTRIDGE

By Javier Gonzalez and the Technical Staff at UniNet



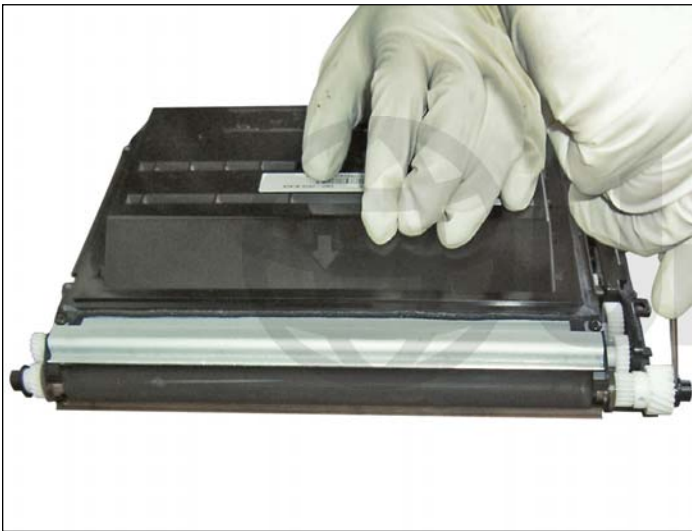
1. Remove the four screws from the top outer shell cover of the cartridge.



2. Remove the fifth screw (circled) from the gear side of the cartridge. Using a small flathead screwdriver, press in on the two tabs (indicated by the red arrows) to release the outer shell.



3. Remove the outer shell cover. You will notice a small adhesive holding it in place. Removing the cover should not affect it.



#### REMOVING THE DEVELOPER ROLLER

4. Remove the locking metal clips located on both ends of the developer roller axle.

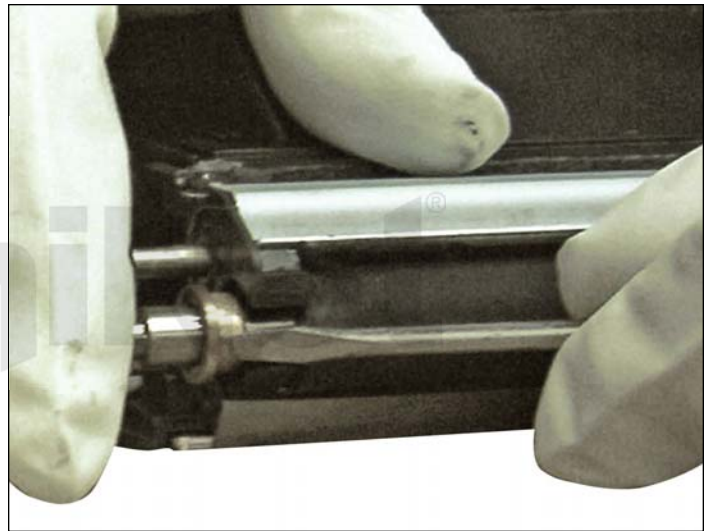
These clips hold the axle gears in place.

Carefully lift the clips out away from the axle, using a small flathead screwdriver.

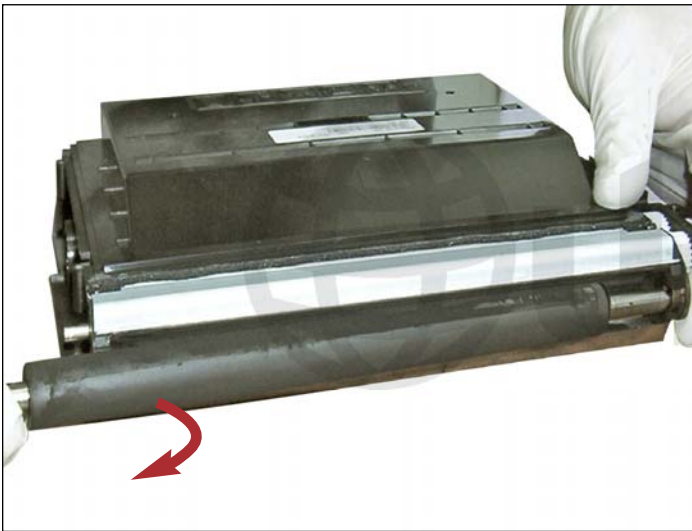


5. Remove the loose gears from each side.

The gears should slide out easily.



6. Remove the metal ring that holds the axle in place on the toner fill plug side. The ring on the opposite end should remain in place.



7. Lift the developer roller forward, then slide across in the pattern shown.

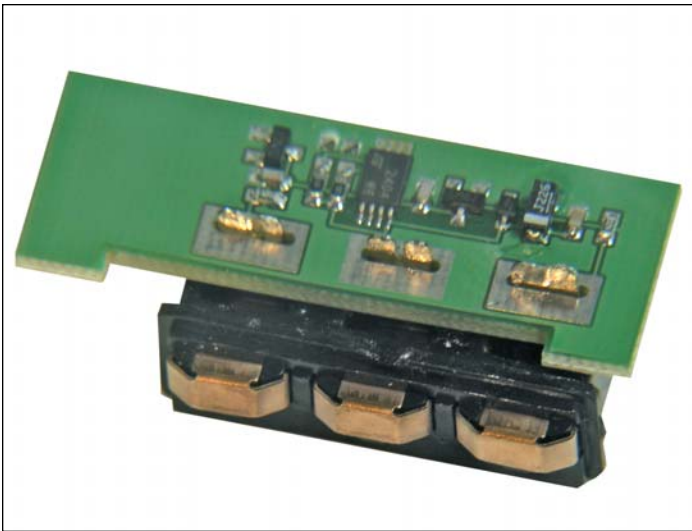


8. Remove the toner fill plug to begin the cleaning process. Use a vacuum on easy areas making sure there is nothing that will vent. Use air pressure for hard-to-reach and sensitive areas.



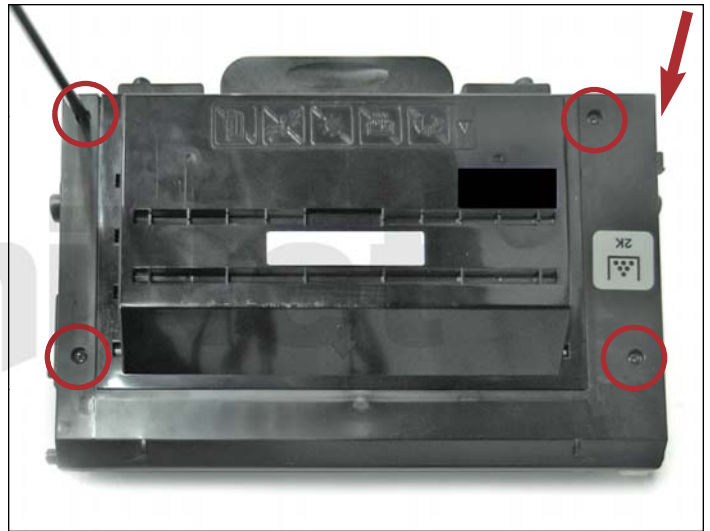
9. After thoroughly cleaning the cartridge and reinstalling the cleaned components, you are ready to fill with appropriate aftermarket toner.

UniNet®



**REPLACEMENT CHIP INSTALLATION**

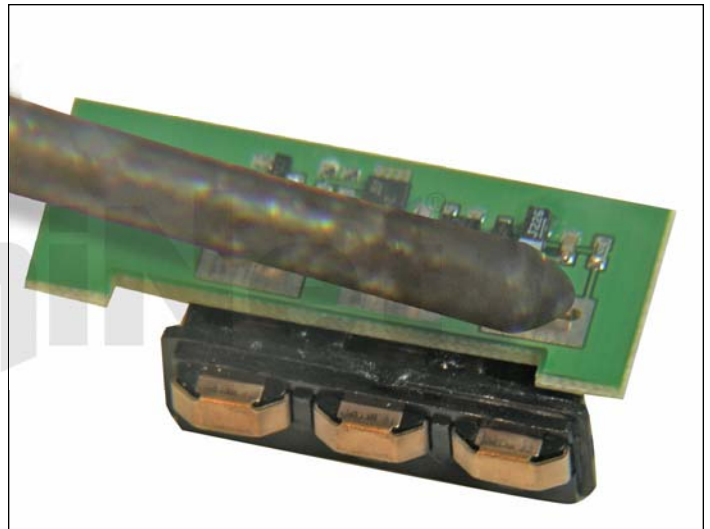
Electrical soldering is required for this procedure.



1. Remove the four screws located on the top, and the fifth screw on the gear side of the outer shell cover. Press in on the side tabs to release and remove the outer cover.



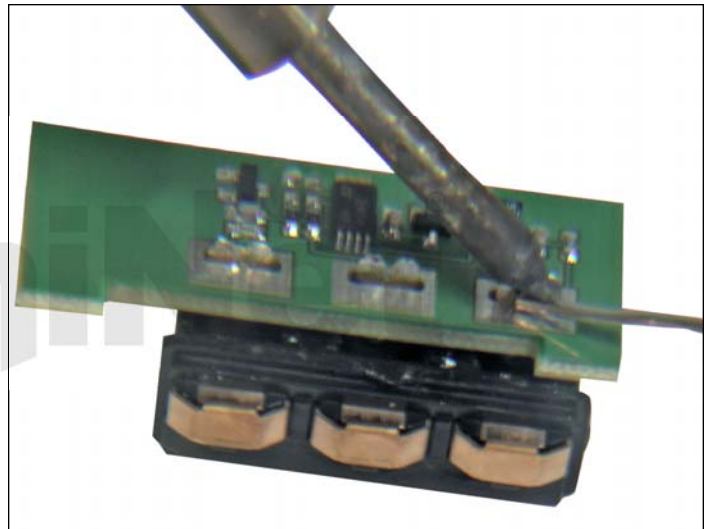
2. Using a small flathead screwdriver, carefully pry loose and remove the cartridge contacts assembly shown (toner fill plug side).



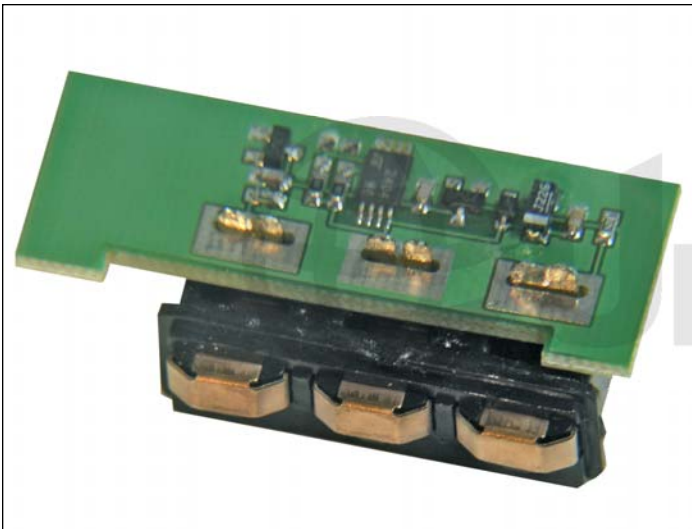
3. Using a heated soldering iron, desolder the OEM chip from the connector. Avoid overheating or any damage to the connector.



4. OEM connector with chip removed.



5. Place the new aftermarket chip in the same position as the OEM. Use a wire solder to weld the chip to the connector.



6. The newly assembled chip is now ready to be installed into the remanufactured cartridge.

**RECYCLING TIP**

You can convert a Xerox Phaser 6100 cartridge into a Samsung CLP-510 cartridge and vice versa. If you desolder the two resistors from a CLP-500 model, you can convert these into a CLP-510 or Xerox Phaser 6100 cartridge.