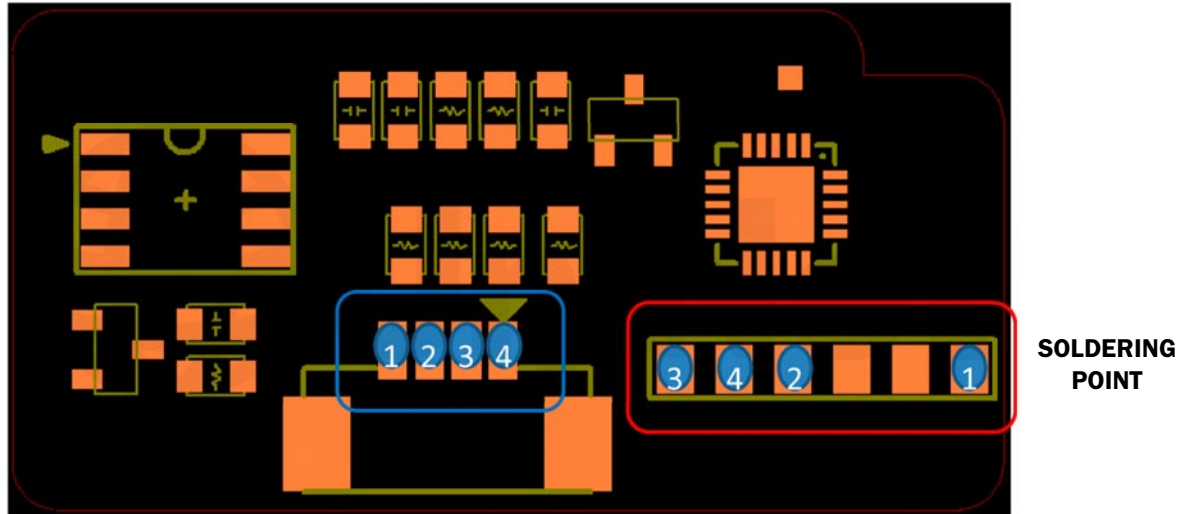


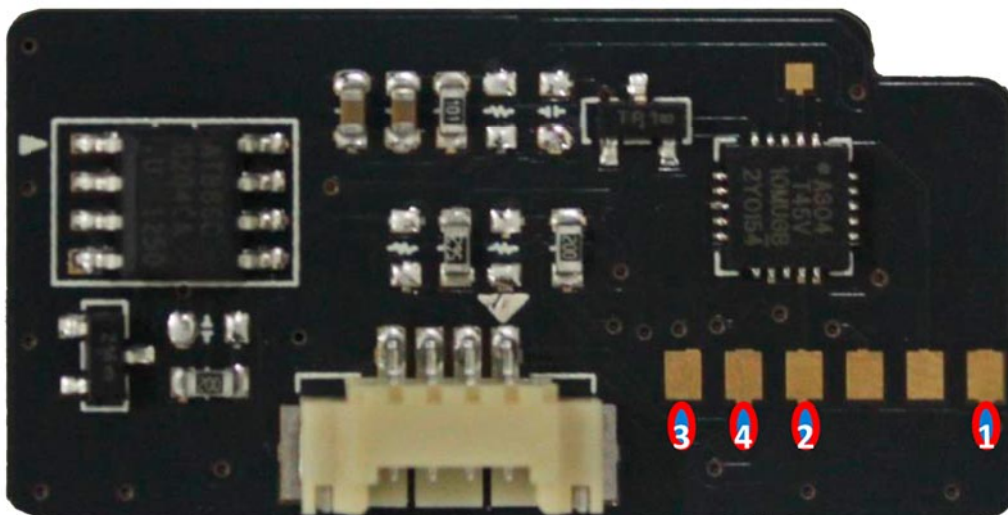
# SAMSUNG ML-4510/4512/6510/6512 MLT-307 DRUM CHIP REPLACEMENT INSTRUCTIONS

By Joe Cachia and the Technical Staff at UniNet

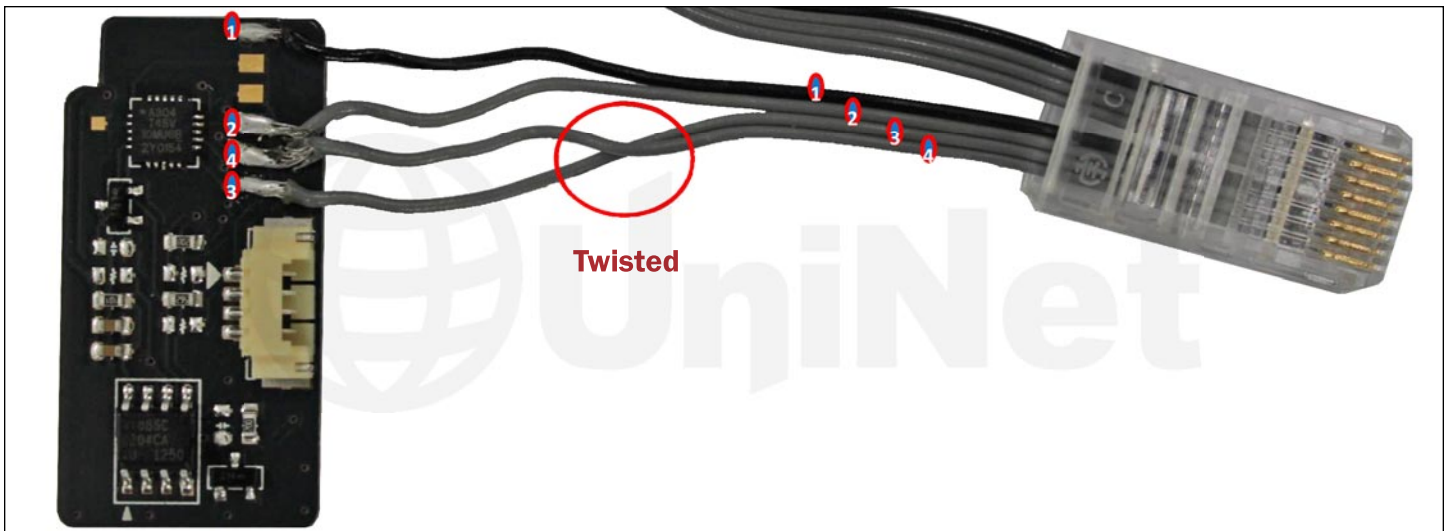


## MLT-307 DRUM CHIP CABLE CONNECTING GUIDE

1. After you cut off a cable from original chip, you should solder that wire in the red box area of above photo.
2. Check the number in the blue box. When you cutoff and solder the cable, you should match each wire to the same number.



MLT-307 drum chip (before soldering)



**Finished MLT-D307 drum chip after soldering**