

# XEROX® PHASER 6100

## TONER CARTRIDGE REMANUFACTURING INSTRUCTIONS



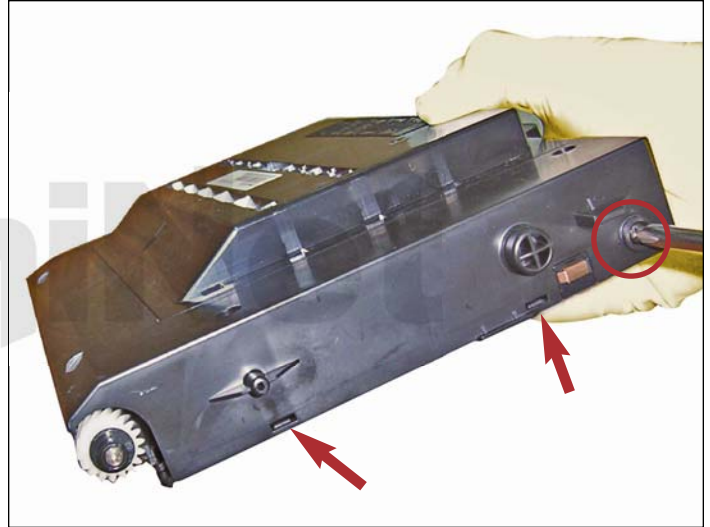
XEROX® PHASER 6100 TONER CARTRIDGE

# REMANUFACTURING THE XEROX PHASER 6100 TONER CARTRIDGE

By Javier Gonzalez and the Technical Staff at UniNet



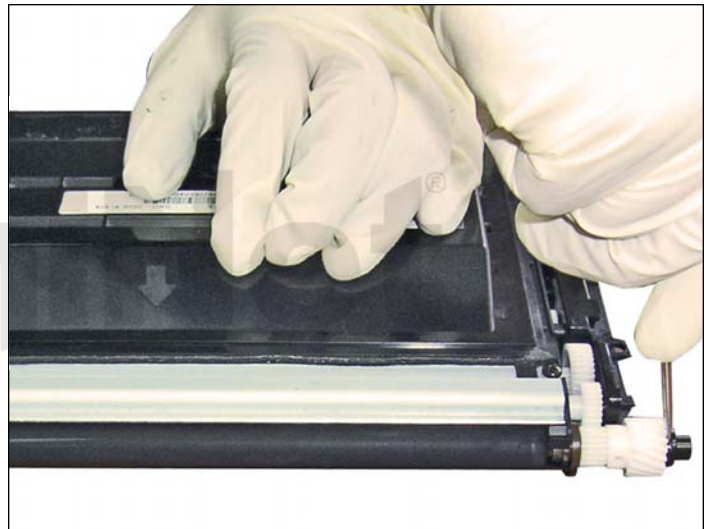
1. First, remove the outer shell by loosening and removing five screws. Four screws are located on top of the cartridge.



2. The fifth screw (circled) is located on the gearside of the cartridge. Also, unclip the bottom side of the shell using a flathead screwdriver.



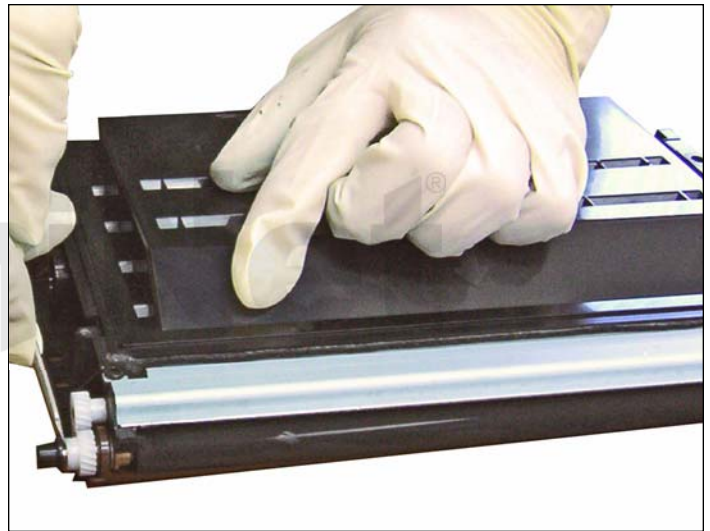
3. Remove the cover as shown. You will notice a small adhesive holding it in place, but it will not be affected if the cover is removed.



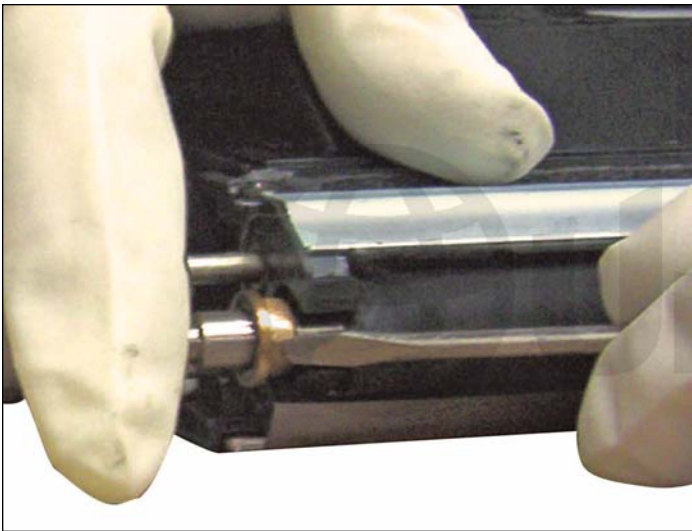
4. Remove the clips located at each end of the axle.



5. Remove the gears from each side.  
They should slip off fairly easily.



6. Remove the locking metal clip by using a small flathead screwdriver. Pull the clip upward away from the axle.

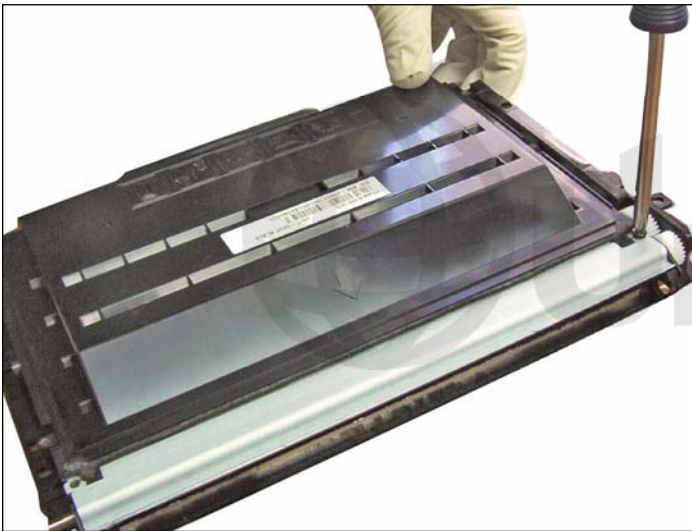


7. Remove the metal washer-like ring that folds the axle in place where the toner fill plug is located. The other side should remain in place.



8. Slide the developer roller out in the manner shown.

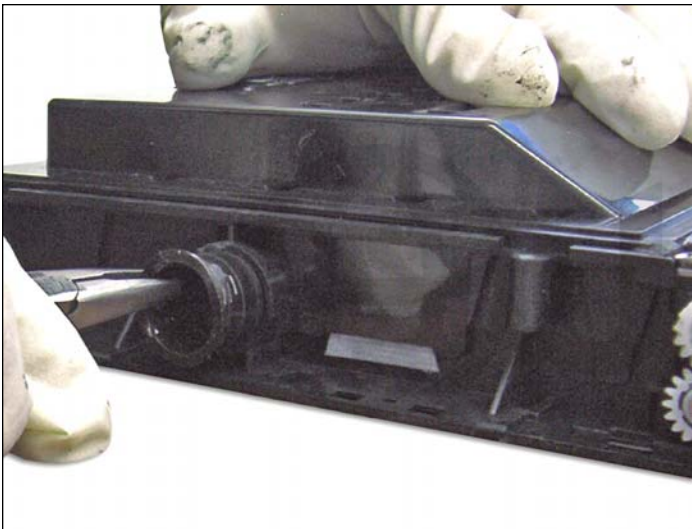




9. Remove the metal cover where the sealing blade is located by unscrewing two screws located on the top of the cartridge.



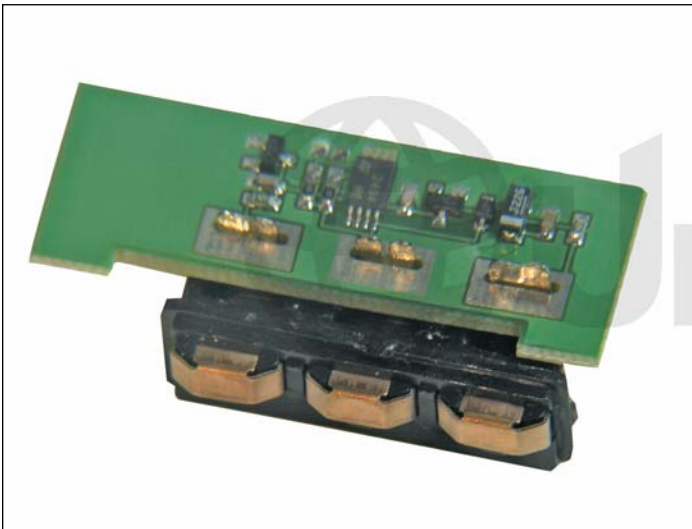
10. Do not remove the piece from the cartridge as there are not many after-market parts available for this printer. All you need is access to clean around the supply roller to ensure a clean cartridge.



11. Remove the toner fill plug and start the cleaning process. Use a vacuum on easy areas making sure there is nothing that will vent. Use air pressure for hard to reach and sensitive areas.



12. After thoroughly cleaning the cartridge and reinstalling cleaned components, you are ready to refill the cartridge.



### REPLACEMENT CHIP INSTALLATION

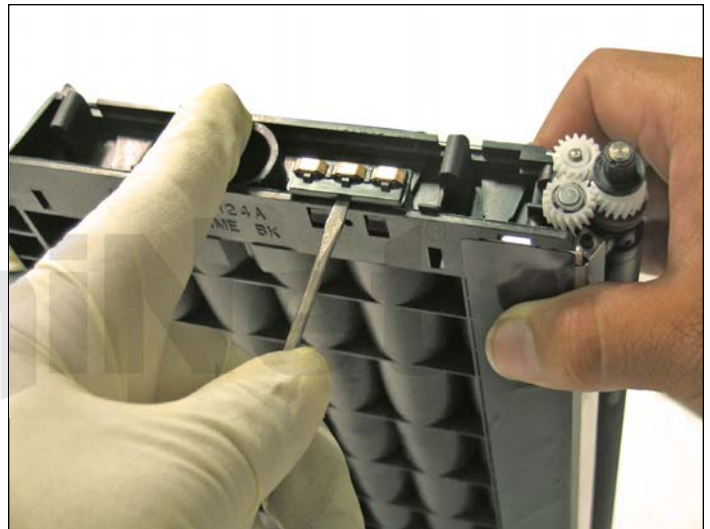
Electrical soldering is required for this procedure.



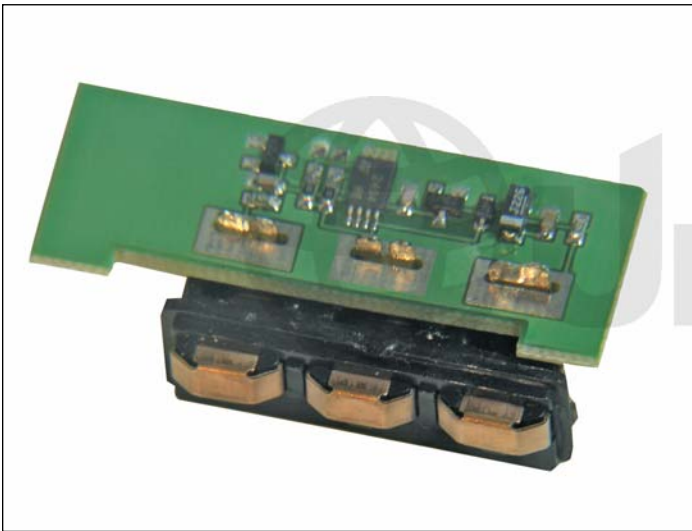
1. Remove the four screws located on the top and the fifth near the gear side of the outer shell as shown.



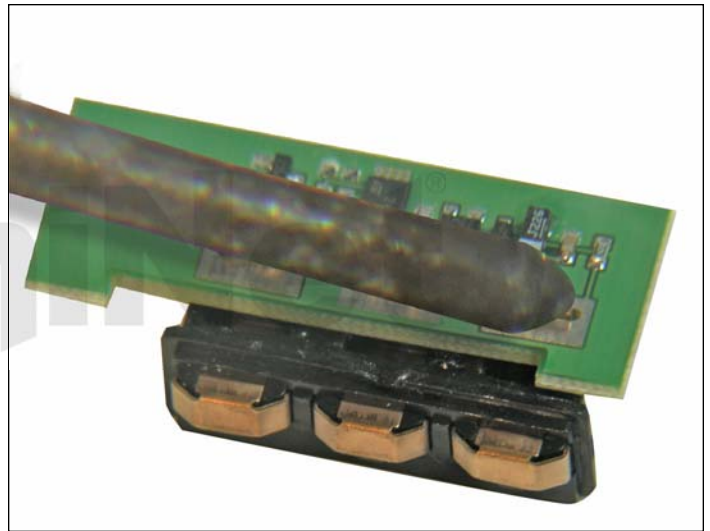
2. Remove the outer shell as shown.



3. Using a small flathead screwdriver, carefully pry loose the cartridge contacts assembly located near the toner fill plug on the side of the cartridge.



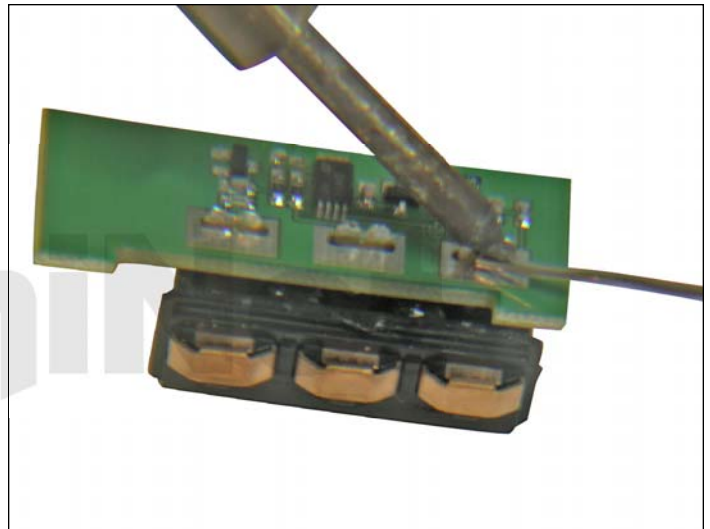
4. OEM chip with connector.



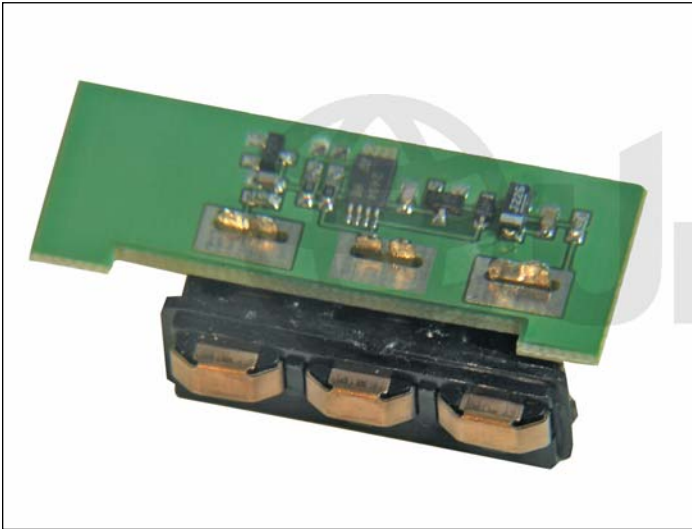
5. Using a heated soldering iron, desolder the OEM chip from the connector. Avoid overheating or damaging to the connector.



6. Connector shown separated from the chip.



7. Place the new chip in the same position as the OEM. Use a wire solder to weld the new chip and OEM connector together.



8. The newly installed chip is now ready to be inserted into your remanufactured cartridge.

**RECYCLING TIP**

You can convert a Xerox Phaser 6100 into a Samsung 510 cartridge, and a Samsung 510 into a Xerox Phaser 6100 cartridge. If you desolder the two resistors from a CLP 500 model, you can also convert these into a CLP 510 or Xerox Phaser 6100 cartridge.